

The Collaborative Programme Euphrates and Tigris (CPET)

Khalil Ammar and Marguerite de Chaisemartin

International Center for Biosaline Agriculture, PO Box 14660, Dubai United Arab Emirates

Background

Salinization of natural resources constitutes a significant component of The Collaborative Programme Euphrates and Tigris (CPET), a five year programme (2013-2018) that aims to assist the countries in the Euphrates and Tigris region to make progressive steps towards improving water management through dialogue, trust building, information exchange, analysis and regional investment prioritization. The programme is funded by the Swedish International Development Cooperation Agency (Sida). The International Center for Biosaline Agriculture (ICBA) jointly with the Stockholm International Water Institute (SIWI), partnering with basin Country Partner representatives and four Implementing Partner Institutions implement the programme:

- the American University of Beirut (AUB)
- International Center for Agricultural Research in the Dry Areas (ICARDA)
- Stockholm Environment Institute (SEI)
- Swedish Meteorological and Hydrological Institute (SMHI)

Objectives

The CPET aims to provide a rigorous evidence base to evaluate transboundary impacts and enable the identification of a range of water management options and a regional investment programme. Following are the thematic priority areas:

- Hydrology and climate change
- Hydropower
- Water quality
- Agricultural water productivity
- Marshlands
- Socioeconomics

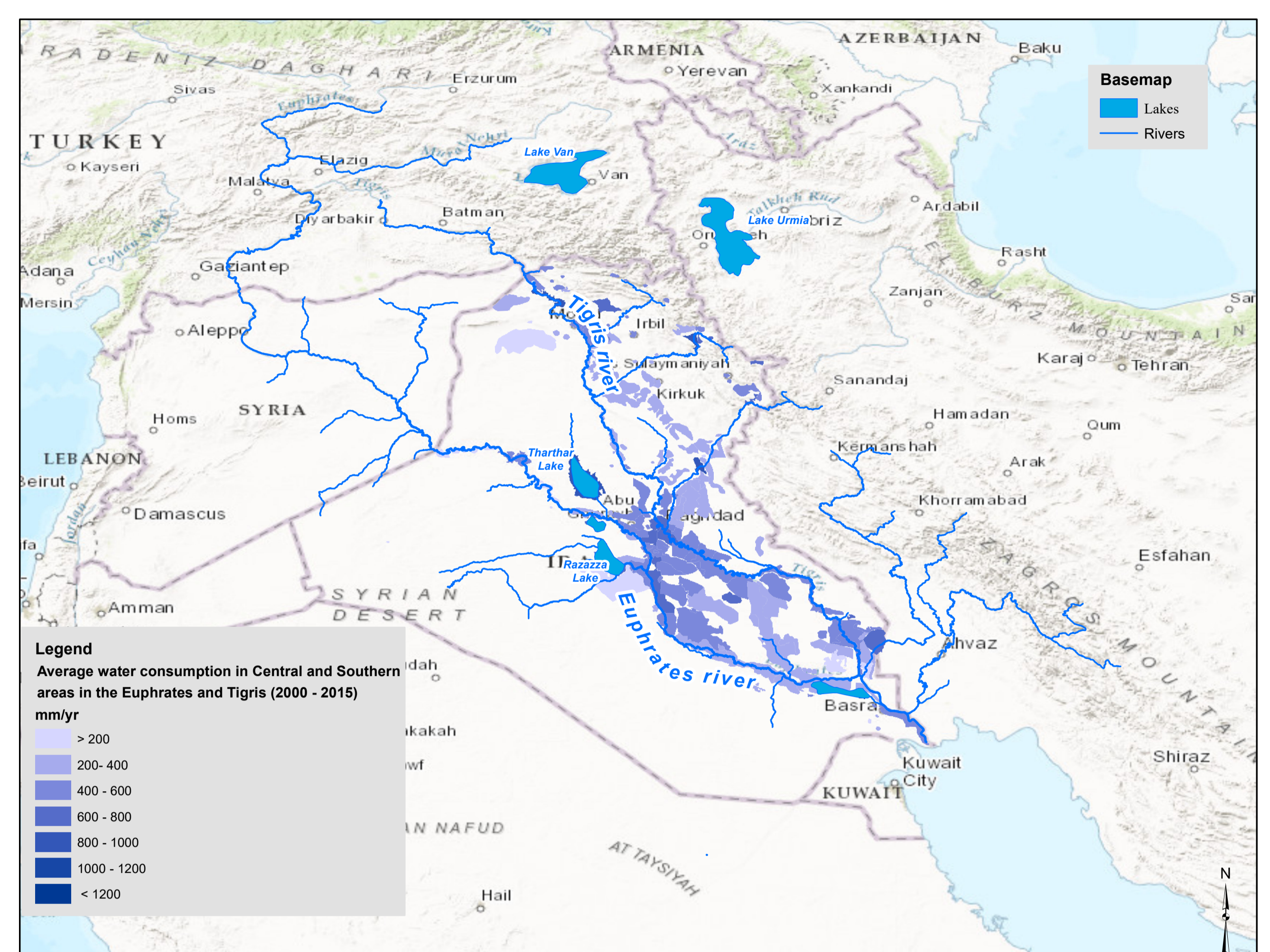
Results and Discussion

The Country Partners jointly develop and periodically steer the program. Activities include:

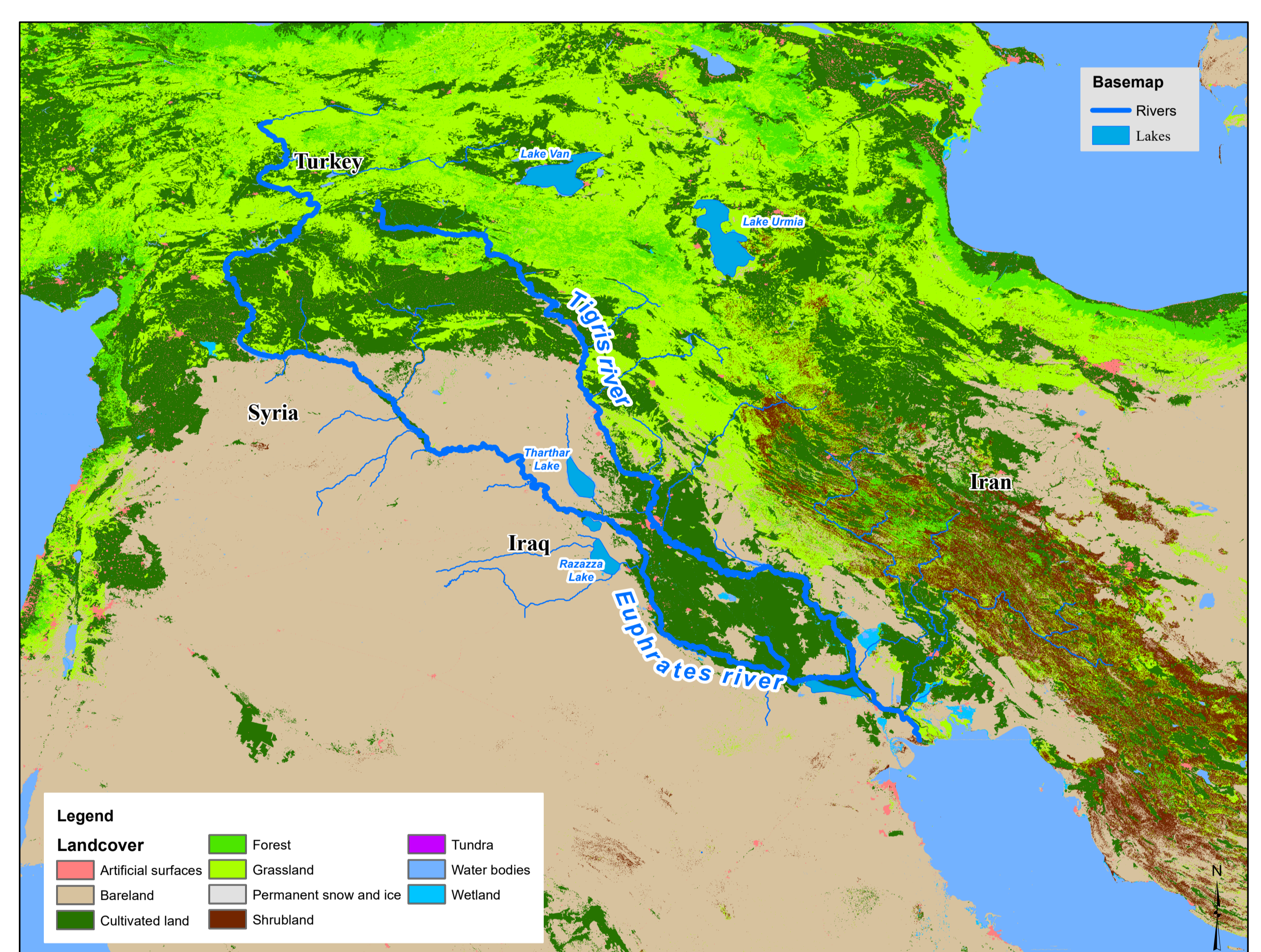
- Building a hydrological model for the Euphrates and Tigris region and incorporating climate change scenarios in a modeling framework.
- Resources management and its utilization specially related to salt affected areas are documented and assessed.
- Water quality and ecological status of the water river, marshlands and coastal zone are analysed.
- Mitigation and adaptive strategies will be discussed and analyzed. In-depth analysis of irrigated and rain fed agricultural production at the regional scale is performed.
- An analysis of hydropower supply and demand options and tradeoffs is integrated

Expected Outputs

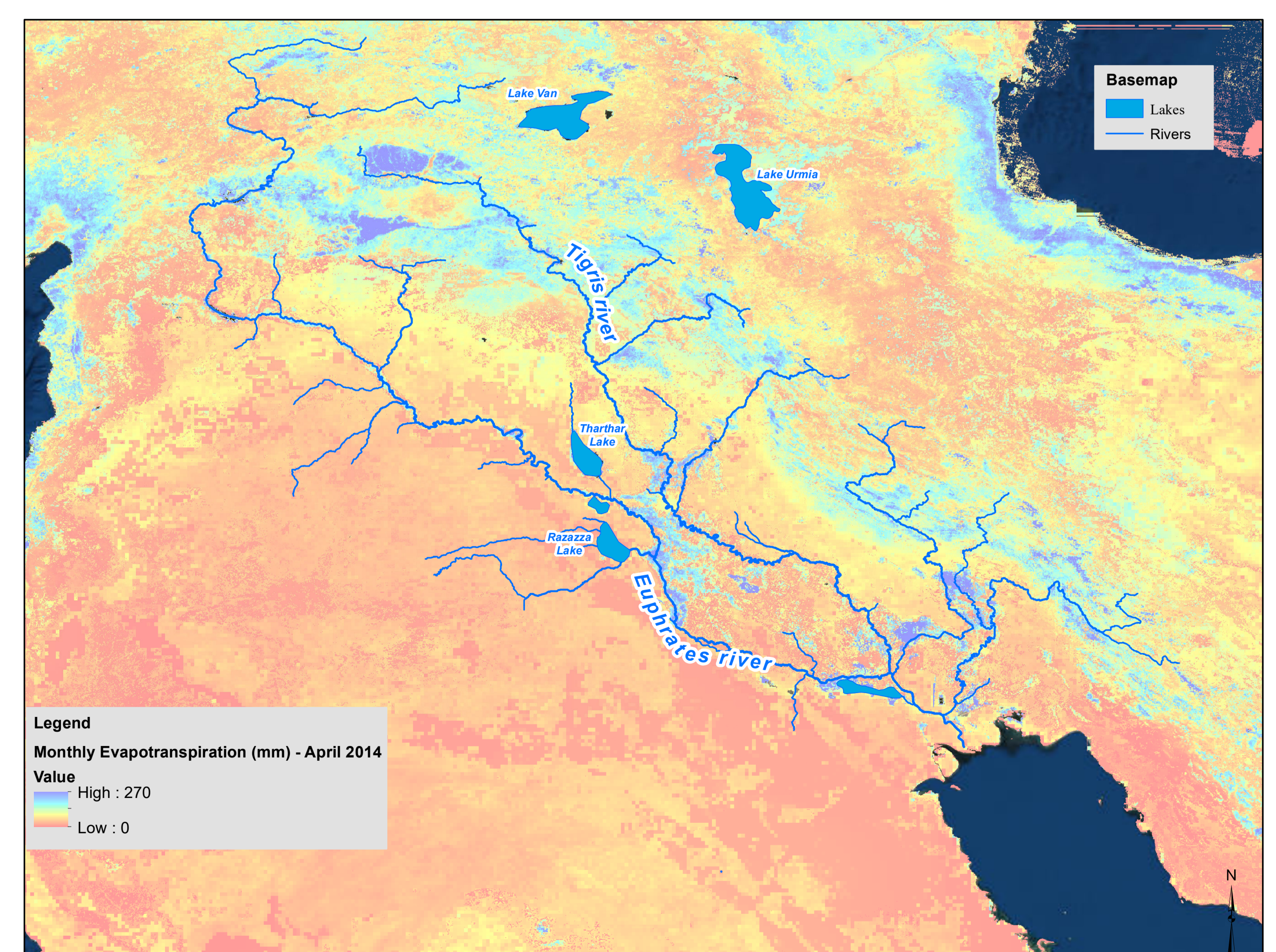
The CPET provides a number of important building blocks that support future cooperative efforts in the region where there has been a low level of cooperation to date. Anticipated outcomes of cooperative efforts for a more efficient and productive use of transboundary water resources in the Euphrates and Tigris region include contributing to improved (1) water security for small and large water users; (2) efficiency and productivity of water use, and generation of additional socio-economic benefits per unit of water; (3) management of ecosystem goods and services at the regional scale and restoration options of deteriorated marshlands; (4) livelihood security in rural communities and reduced rural-urban migration; (5) participation of stakeholders, including women, in decision-making on cooperative action in water management at the regional level; and (6) accountability and communication.



Average water consumption (millimeter/year) in Central and Southern areas in the Euphrates and Tigris (2000-2015)



Land Cover for the Euphrates and Tigris region



Monthly Evapotranspiration in millimeter for April 2014